

BROUGHTON *Spurtle*

Broughton *Spurtle* is
free
and completely
independent

No 54

November 1998

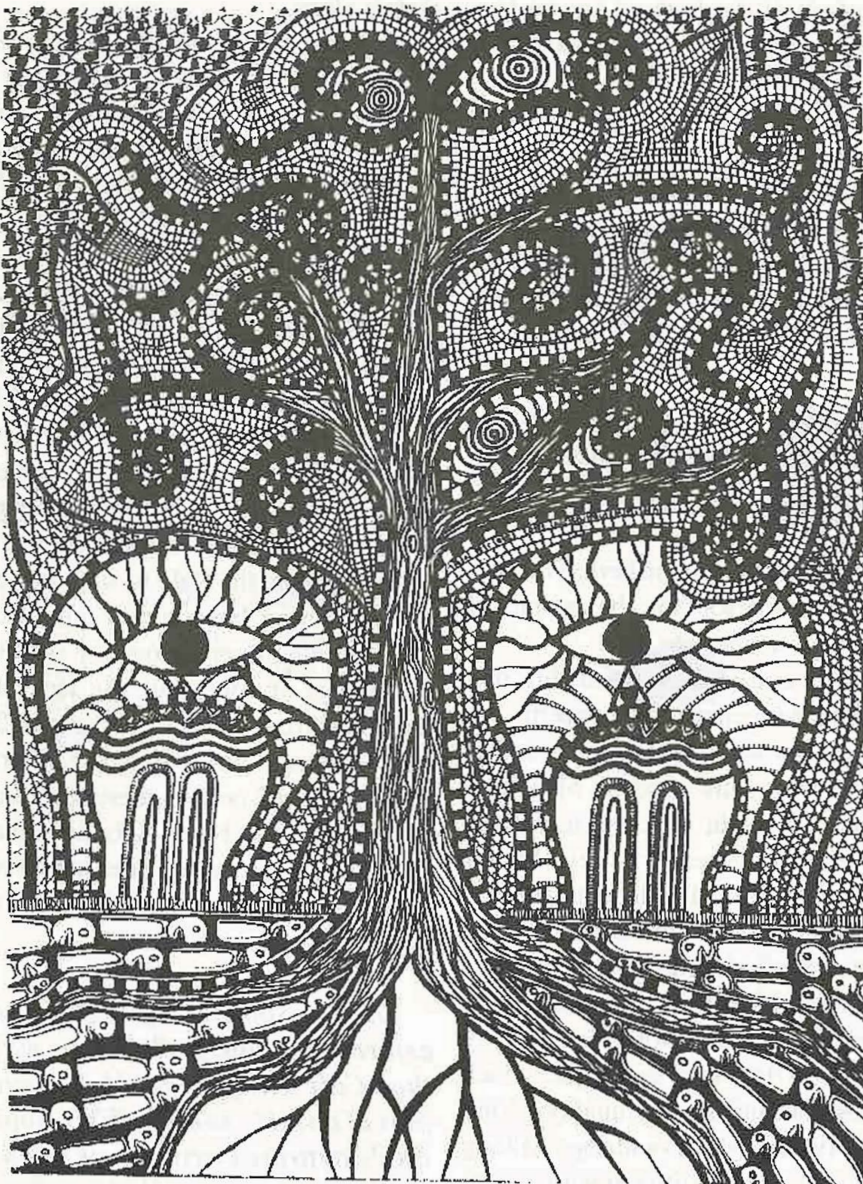
Good news for Graffiti

Cafe Graffiti will be with us for a while yet - at least until the end of next August! Last month's **Spurtle** was scarcely printed when we heard that "planning and technical adjustments to the plans" for Mansfield Place Church mean work can't start in spring as planned. There will be a delay of at

least three months, perhaps more. So Mansfield Traquair Trust has extended Graffiti's lease on through to the end of next Festival Fringe.

This gives a welcome short-term reprieve for Graffiti - Pete Simpson's head is already buzzing with ideas for next summer! But it also provides

breathing-space for a re-think about the future use of the building, including the possibility of a long-term role for Cafe Graffiti. Following last month's article by Joy Hendry, inside this **Spurtle** we present some more local opinions on the issue.



The tree of accumulation, by Ian Middleton - at the Bellevue Gallery

Gay Centre changes hands

After almost 18 months of negotiation, Outright Scotland has finally sold the Lesbian, Gay and Bisexual Centre in Broughton Street to the charity that has been responsible for running the Centre for several years. Sold at well below market value, it's now owned by the LGBT Community Centre Project.

Outright Scotland will continue to be based at 58a Broughton Street. Assistant Secretary Brian Dempsey told **Spurtle**: "We hope that the sale will allow new people to come forward to help run the Centre, which has been an important and high-profile resource in the area".

The New Visionaries

For the second half of October the Bellevue Gallery presented 'THE NEW VISIONARIES - An Exhibition of Scottish Artists Extraordinary'. **Spurtle** went along to see it - report on Back Page.

Talking about Cafe Graffiti...



**Fay Young,
East Claremont
Street:**

Let's work hard to keep Cafe Graffiti as an essential part of the Mansfield Church development. Edinburgh has plenty of exhibition space for middle-class, middle-age people. Cafe Graffiti brings something rare, important and much more interesting to Broughton not just during the Festival but in the terrific programme for young people all yearround (which also often appeals to some of us not-so-young). Cafe Graffiti adds something vital to our area - a sense of fun, with responsibility.



**Calum Buchanan,
Bellevue Crescent:**

I'm writing to say how much I agree with Joy Hendry's views in support of the Cafe Graffiti continuing to provide first-class live entertainment, not only during the Festival but throughout the year, for both the young and not so young (moi). For example, last Saturday a top notch nine piece Cuban band performed a great set in the basement of Graffiti. To see such fabulous and exotic music performed outside London is a rarity, never mind on my own doorstep. The joint was jumpin', but the silence that surrounds the Mansfield Place Church on the outside is strange, as if all the high spirits vaporize into the night when they come to the bottom of Broughton Street.

Pete Simpson runs a tight ship at the Church, and during his tenure most certainly has helped to provide for its security and maintenance before the sale to the Mansfield Traquair Trust.

The plan to provide offices for voluntary organizations in the basement is laudable, but hardly compatible with the intended use as a performance/exhibition space in the main body of the church upstairs, which would require extensive backstage facilities. And offices could

be situated in any of the "to let" sites in the town. To scrap an existing venue so unique and critically successful, one which runs without subsidy, seems crazy in a city which wants itself to be seen as truly international.



**Janice Johnson,
Bellevue Road:**

I've lived in Bellevue Road for 21 years. One of the best things to have happened is the rise and rise of Graffiti at Mansfield Church, as it has developed into a really dramatic, atmospheric and very popular base for Fringe and other shows. This summer especially, as it spilled into the school playground, with the 'Amsterdam Parade', it was so busy - impossible to get a seat a lot of the time!

I love the Fringe, the whole mad scenario. I realise the Traquair murals must be preserved and kept dry, but surely, Graffiti can be allowed to use parts of the building and garden, some of the time at least. Surely compromise is the key here.



**Gregory Smith,
East London
Street:**

Joy Hendry takes upon herself the role of Spokesperson for the people of Broughton when she says:

"For us it is a quality of life that counts, not commercial concerns."

I am myself a local resident, in fact as I live directly opposite Mansfield Church I might describe myself as Cafe Graffiti's next door neighbour. I too am concerned with quality of life. I am concerned that for me Graffiti means endless nights of broken sleep. It means drunks shouting their farewells in the street outside my bedroom late into the night, which does not enhance the quality of my life. Taking toddlers and dogs walking along pavements littered with broken glass from smashed beer bottles does



not enhance the quality of their lives at all. Walking through dried up pee and puke in the doorway of my home is not life with quality. Bedroom windows, shutters and curtains all closed, and still clearly hearing the bands and D. J. from Graffiti is not a healthy or life enhancing way to obtain a refreshing night's sleep.

Mr Simpson is making money, a profit! Perhaps if some of the money had been more wisely employed, on sound-proofing I might suggest, then there would not be "plans afoot to turf Pete out."

Prompted by Mr Smith's letter, **Spurtle** went to ask some more of Graffiti's immediate neighbours what they felt. Of 26 residents of Mansfield Place, Cochran Terrace and East London Street: 4 would welcome Graffiti's speedy departure, blaming noise and mess for their opposition; 16 definitely want the Cafe to stay - noise problems have been sorted out, and they've either been across for shows themselves or appreciate the lack of rowdiness from youngish audiences; 3 aren't bothered one way or the other; the remaining 3 people questioned are not anti-Graffiti, but they believe the Cafe must go because it does not offer a viable way of preserving the building and the murals, long-term.

Their response highlights the central question: Is there any way that Cafe Graffiti could become part of a viable solution? We hope the delay to the Trust's plans means that question will be more thoroughly examined.

Don't pollute the river!

A report on the Water of Leith by pupils at Broughton Primary School. This is what they wrote:

"When we went to the Water of Leith it was invaded by pollution. All the animals are suffering because of plastic bags, trolleys, nets and broken bits of glass."



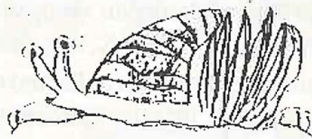
"The good thing is that there are a lot of creatures in the water, but the bad thing is the litter and pollution."

"Sometimes I play there, and soon I think the river will be nothing but pollution."

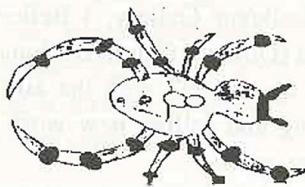
"If they were to clean it, people might be able to swim in it again."

Ideas for action

- Fishermen and women should pick up their tackle because if they want fish they won't get any - all the fish will be caught in their leftovers.
- I think they should clear the river every month or so.
- Litter gutters would collect litter thrown over the side of bridges. Someone from the Council would have to clean them out regularly, but I think it would work.
- You could stop people throwing litter on the water if we could have river wardens who would walk up and down the river at least once a day.



If the water was very clean you might find this creature - the Water Spider.



The Pond Skater lives on the surface of the water. It feels the vibration of the fallen insects and skates across, captures and eats them.



The Great Diving Beetle lives underwater: it attacks small animals like fish and frogs.



Adam Brown
Alan Macinnes
Amanda Sutherland
Daryl Gladstone
Euan McRae
Jamie Johnson
Josee Pimbed
Ryan Landa

BRIEFLY

Last month we noted a planning application by Miller Homes, for 44 flats with parking on the Champions (ex-Magnet) site at 54 Annandale Street. Several objections have now been lodged, by local residents and the Community Council, on the grounds that more housing goes against the balanced development sought in the Hopetoun area - particularly when it would be replacing a leisure facility for young folk.

The Community Council meets again on Monday, 2nd November, 7.30pm at Drummond Community High - all welcome. At its recent AGM the following office-bearers were elected: Alasdair Elders, chair (556 7313); Dave Rushton, vice-chair (556 6547); Allan Wilson, secretary (day-650 6629, evening-554 9144).

Jane Coville of Bellevue and Claremont Residents Association tells us that in recent weeks there has been more parking on the crossing points in East Claremont Street - signalling the return of students after the summer break, she suspects. The Association is exploring ways of enforcing clear access for pedestrians.

Broughton History Society has organised a study visit to St Mary's RC Cathedral in Broughton Street - Monday, 23rd November. For details contact Secretary Gavin MacGregor on 556 7727.

Han Pict

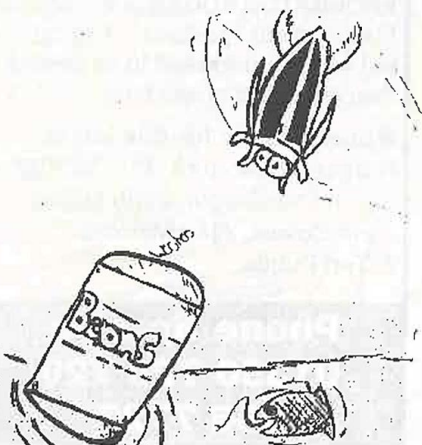
Come and see our unique range of Chinese furniture and many other things now available han pict from all over the world.
At 5 Barony Street. 478 7006

NEXUS CAFE BAR

60 Broughton Street
478 7069

Open 11-11pm
New Menu

Live Music Wednesday 9.00pm
Quiz Night Tuesday 9.30pm



No ordinary exhibition

For two weeks in October the Bellevue Gallery hosted an exhibition of work by 20 "artists extraordinary" – self-taught, visionary artists who have lived or are currently living in Scotland. To quote the catalogue: "They come from many different backgrounds - some coping with ill-health or mental health problems, others from isolated rural communities or feeling socially excluded."



Amongst an exhilarating variety of styles and materials, the stone head shown here is the work of Adam Christie, born and brought up in the Shetland Isles. Overtaken by serious mental illness in his early thirties, he was admitted to hospital - where he remained until he died in 1950, aged 82. But in hospital his talent began to flourish. For his stone carvings, he made his own chisels from discarded

nails; and he also wrote, made violins, and carved and painted wood.

Spurtle came away feeling grateful for the chance to glimpse this treasure trove. The Scottish Art Extraordinary Trust has collected over 500 works. It is now launching a campaign to find a permanent home for this collection, and a national Centre for Art Extraordinary - hopefully here in Edinburgh. For more information contact the Trust's Secretary, Judith McNicol, on 4469436.

The Bellevue Gallery, 4 Bellevue Crescent (Director Calum Buchanan) was set up in 1997 with the aim of exhibiting and selling new work by emerging artists.

It was felt that there was a place for work, perhaps for a minority taste, not normally handled by commercial galleries in Edinburgh, which would be of such a standard that it would gain in recognition.

Since its first exhibition for the 1997 Edinburgh Festival the gallery has put on eight solo shows of painting and an exhibition of photographs sponsored by the Red Cross in their campaign against anti-personnel landmines.

WOODCRAFT SUPPLIES

Picture Framing • Keys Cut
New shoe repair service
Timber Boards Cut to Size
Monday-Saturday
9.30am-6pm (Closed Wed. pm)
109 Broughton Street
556 9672

DIRECT JOINERY SERVICES

Cellar Lining - we can convert your damp cellars into valuable storage space.

We supply and fit new windows at unbeatable prices.

Highest quality - made in Scotland.

Repair and maintenance for all PVC, Alum or timber windows.

Floor Sanding - we now offer the complete sanding and sealing service.

For all your joinery requirements.

Tel/Fax 556 8821

Mobile 07050 169789

Safeguarding our architectural heritage
Protecting the city's amenity

.. join us

THE COCKBURN ASSOCIATION
(The Edinburgh Civic Trust)
Trunk's Close, 55 High Street
EDINBURGH EH1 1SR
0131-557-8686
Cockburn.Association@btinternet.com

Contacts

Updated 25th October 1998

Bellevue and Claremont Residents Association
Alan McIntosh 556 4848

Broughton Place Residents Association
Judith Hallam 556 4595

Gayfield Association
William McNair 556 4493

McDonald Area Amenity Society
Bob Stewart 557 1267

New Town Broughton and Pilrig Community Council
Allan Wilson 554 9144

Broughton History Society
Gavin MacGregor 556 7727

Councillor Margaret McGregor

Broughton Ward
529 3283 (her office at City Chambers). Surgery at Drummond Community High School on Wednesdays, 6pm to 7pm.

Councillor David Guest
New Town 558 8823 or 529 4268. Surgery at 67 Nothumberland Street on Mondays 6pm to 6.45pm.

Councillor Douglas Kerr
Calton Ward 529 3279 (if you live in Gayfield) Surgery at Calton Centre, Montgommery St, on Saturdays, 10 - 11am.

Malcolm Chisholm MP
555 3636 **Surgery on Saturdays at Drummond Community High School at 1pm.**

BROUGHTON BOOKS in Broughton Place are our "postbox". You can put a letter addressed to us through their letter box at any time.

Spurtle team for this issue:
Norma McKendrick, Ken McKay
Gavin MacGregor, John Dickie,
Jane Coville, Alan McIntosh
& Tim Puntis.

Phone Spurtle
01350 728 720
or 556 7727