

18 SEP 2004



Spurttle

BROUGHTON'S INDEPENDENT STIRRER

No 117 broughton.spurttle@blueyonder.co.uk Free

**August
2004**

**Tel: 556 0903
556 7727**

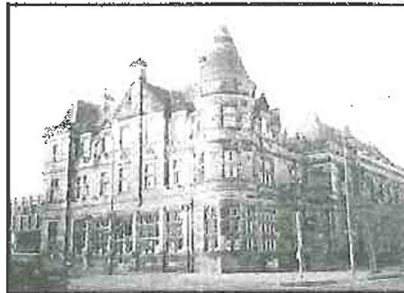
2
HT
153
B81

'See you at the weekend!'

Our local public library is now open longer at the weekends. Saturdays from 9am to 5pm and Sundays from 1pm to 5pm.

McDonald Road is one of six Edinburgh libraries given those extended hours. This followed surveys which showed a clear demand for weekend opening, and a pilot which showed an increase in library use when hours were extended - by families and minority groups in particular. Five per cent of the weekend visitors during the pilot were new users.

The City Council has improved library stock to complement the extended opening



hours, and training has been provided for new and existing staff. If you take advantage of the new weekend hours, you'll find access to the Sunday papers; books and audio items; local history material; free access to computers, e-mail and the internet (with trained staff on hand to help); books and toys for children; information on City Council services — and a room for hire by local groups!

BRIEFLY

Saturday, 14th August is **Festival Day down at The Yard Adventure Centre** (Scotland Yard). From 11am to 4pm there will be a bouncy castle, cafe, stalls, live bands, story telling, games, face painting, a bar, and a barbecue.

Monday to Saturday, 16th - 21st August is **Open Week at Broughton St Mary's Church in Bellevue Crescent**. Between 10am and 4pm you can go in and have a look round the church. Descriptions of the building and its history will be available; and volunteers will be on hand to offer tea and coffee.

Wimpey the housebuilders applied three times to develop the former bus depot at Shrubhill; and three times the City Council's planning committee turned them down. The developers appealed to the Scottish government, and a public hearing was held in March. Now the enquiry's verdict has been announced: the City was right to veto the proposals because of poor design. **Congratulations to all those who worked so hard for this result.** We hope it won't be too long before someone comes up with proposals worthy of this prominent local site.

Last month we reported our local MP's reaction to a planning application to build housing and commercial units at 130 McDonald Road (the Martin and Frost site) - 'one of the most unacceptable proposals I've seen', he said. Now the Community Council has sent in its objections. 'We objected in detail to a wholly unsatisfactory application,' the CC planning convener Bob Stewart told **Spurttle**. 'It is the worst I have seen in terms of architectural poverty, utter lack of consideration to the locality and to neighbours, materials, and useable open space.'



Farewell! At the end of the last day of business, friends met at **Woodcraft Supplies in Broughton Street** to celebrate 45 years of service to the local community, and wish Alastair Shaw (on right) all the best for the future.

Contacts

Bellevue and Clarendon Residents Association

Yvonne Pryor 466 1144

Broughton Road Group

Pat Eccles 556 7550

Broughton Village Association

Stephanie Harvey 557 2762 (day)

Friends of Hopetoun Crescent Garden

Mitchell Manson 557 1933

Gayfield Association

William McNair 556 4493

McDonald Area Amenity Society

Bob Stewart 557 1267

Redbraes Residents Association

George Hosey 467 6151

New Town Broughton & Pilrig Community Council

Annette Carroll 556 7586

Cllr Trevor Davies 529 3221

Surgery at Broughton Primary School
Wednesdays, 6.30pm-7pm, school
term-time

Cllr David Guest

558 8823 or 529 4268

Surgery at 67 Northumberland Street,
Mondays, 6.30pm to 7.15pm

Spurtle is your local community paper.

We aim to inform on local affairs; raise local issues; publicise the work of local action groups; make connections between 'the news' and people's own lives in Broughton; and stir things up a bit!

We'll support people looking for a fair deal, but not protect privilege. We're not connected to any political group or party. And we don't get a grant from anybody to finance the paper.

We invite you to contact us:

- react to what you've read in **Spurtle**
- raise new issues
- let us know about community activities
- tell us what you feel about life in Broughton

Telephone: 566 7727 or 556 0903

Write to us: c/o Broughton Books,
2a Broughton Place, EH1 3RX - you
can put a letter through the letter box
at any time.

Email:

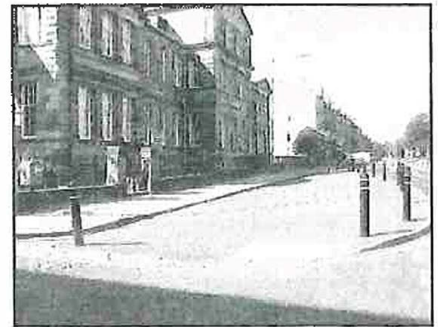
broughton.spurtle@blueyonder.co.uk

Streets are places — not just through-routes

Can we make our streets better places to live in? The new 20mph zoning in Broughton could be a major step in the right direction - if we find ways of building on it.

Elsewhere ideas about how to return streets to pedestrian use are being tried out - creating 'home zones'. Now a group of representatives of local organisations who have been meeting with our local councillor and various council officials, known as the Broughton Network, have got involved in this discussion. The key to any progress is for local residents to decide what they really want in their own streets; then they and the City Council can work out what practical steps can be taken.

Results of a survey of parents for the Safer Routes to School Project are due in September: that will be one important source of information. But streets have to meet a wide range of needs; it makes sense to get together and try to reconcile competing demands as far as possible. Could the space in your street be used in a better way? Could the right combination of parking spaces, built-out kerbs and planted greenery soften the look of the street? Every street is different,



As a result of traffic calming measures in East London Street, a big chunk of space has been handed back to pedestrians. But it looks awful! Could the next step be plants and benches?

so there's a strong case for starting off at individual street level.

The UK-wide organisation Living Streets has produced a DIY handbook for anyone wanting to do something practical about all this: 'The street audit method is simple. Small groups of local people walk the area to be audited and look for good and bad points along the way. As issues are identified, they are noted on large-scale maps and briefly described on report sheets.'

Spurtle has invested in a few copies of this DIY handbook. We'd be happy to lend them to residents associations or anyone else who might tackle a street audit.

'I have to wade through papers and chicken bones'

Keith Cowan of Antigua St. writes:

My main gripe relates to the amount of litter created by people throwing down their chip wrappers and take-away containers. Yes, the Council come and dutifully pick it up in the morning, but they don't take action to stop people doing it. So I regularly have to wade through papers and chicken bones to get to my door after a night out. I'd like to see some action from the Council and their Environmental Wardens to target the worst cases.

Referring to recent debates about drink-fuelled disorder he

adds:

As a society, we seem to be rather keen on dealing with anti-social behaviour by the so-called 'neds', but less good at dealing with anti-social behaviours caused by the practices of business. It would be good if there was a test that said, 'no licence shall be granted unless the licensee can show that to do so would make a positive contribution to the economic and social life of the local area'.

If you like, a requirement to be a good neighbour.

Continued on p3

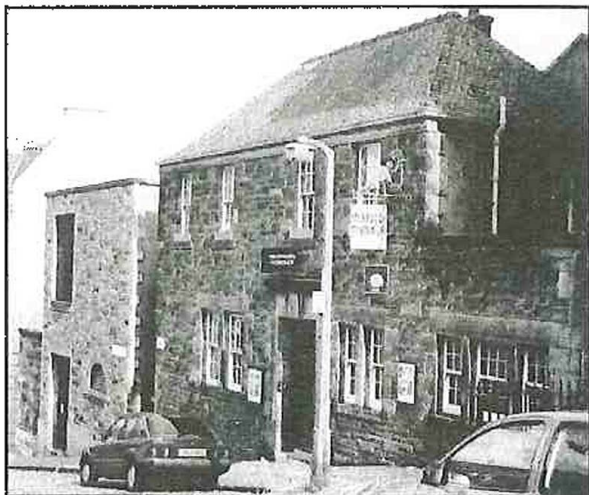
The Fringe in Broughton

The glory days of Cafe Graffiti and Palladium have gone. But Broughton's not a total cultural desert at Festival time!

At **Drummond Community High School CLUBWEST** offer half-a-dozen different shows, including Dawn Gillespie - 'Queen of the Risqué Blues', and theatre featuring 'a vocal symphony with a cast of 50'. (Venue 212, tel.07720 285 550).

More theatre at the **Sundial Launderette** in East London Street - see Belle's View on our back page for the details.

Over the years, **The Phoenix** in Broughton Street has been famed for go-go dancers at one time, Sunday morning church services at another. For this Festival the Cellar will host stand-up comedy: 'The Windsor gatecrasher - but is he funny? No refunds!' (Venue 255, tel.07814 793 140)



Venue 144 -
Edinburgh
Printmakers
Workshop on
Union Street

The Outhouse Cafe in Broughton Street Lane has two shows in the early evening, Fair Pley 'mixing comedy, music and politics' - but only for 4 nights, 12th to 15th August; and later on Kurt Stevens performs 'Anthems from the West End'. (Venue 198, tel.557 6668)

At **Club Ego** in Picardy Place the musical offerings include 'Beauty and the Beat' - 'Christina Bjordal recreates the classic Peggy Lee; and there's Funk Fair - Scotland's only 20th/21st Century Design Fair' on 1st and 15th August, from noon., (Venue 204, tel.226 0000)

There are also exhibitions: at **Merz Gallery** in Broughton Street, 'Zip - The Art of Joey D.' (Venue 207, tel.558 8778); and at **Edinburgh Printmakers** in Union Street (Venue 144, tel.557 2479) - see Belle's View for more details.

Paving over gardens

Last month we reported local worries over the trend towards hard-surfacing gardens; and Lothian MSP Robin Harper's intention to get a clause included in the next planning bill that would require permission to create a driveway. Local resident Mrs A. Forrest reacted strongly:

As regards your opinions on paving a garden over, well I did mine. Do you know why? That is my business. Do I have a garden at the back to accommodate the birds? Also my business. My theory is people should mind their own business and stop being so nasty in their own mind. Then they might see sunshine around them instead of doom and gloom.

Spurtle asked **Robin Harper** to explain why he thinks action is necessary:

Hard-surfacing of garage forecourts and gardens is going to cause all sorts of problems, if it becomes the norm. First, there will be tremendous pressure on drainage and sewage systems as they try to cope with the extra run-off. This could lead to more flooding in the city centre, and expensive damage to the drainage system itself.

The second result could be a lowering of the water table under the city, leading to sinking and subsidence, threatening the integrity of the buildings themselves, especially heavy old stone-built dwellings.

The third major effect would be a loss of biodiversity, just as the City is trying to increase it, and a further threat to the survival of any trees affected, as their root systems are deprived of access to water.

There is an alternative, sustainable urban drainage systems, or SUDS, which allow reinforcing of driveways, while allowing water to permeate them, by using a sort of criss-cross 'sieve' construction, allowing water to escape directly into the ground.

Continued from page 2..

Back in November 2002 we reported that the City Council had agreed to local Councillor Davies' proposal that a new clause be included in the licences of all take-aways. This would oblige them to sweep the area in front and either side of their shops every day - or risk losing their licences. So we asked Councillor Davies what progress had been made on this:

The Regulatory Committee did agree to include that clause in take-away licences. But it can only be included in existing licences at

the point of renewal. We are slowly seeing an improvement in the litter problem - but it is a constant battle. There is more and more packaging out there and a significant number of people who still just to drop it in the streets.

If this clause is included in a particular take-away shop licence, and if it is being consistently ignored, then I would be willing to press the Regulatory Committee to instigate enforcement action.

Councillor Davies is now going to look into the records of two particular take-away businesses.

Belle's View



Hi fans

Aaaaaaargh! The year has galloped by again, and the flaring nostrilled beast that is The Festival is almost upon us! And as usual, there are cultural treats a go-go to be found in happening Broughton and Bellevue!

If you find yourself in the **Sundial Launderette, East London Street** at 10pm on any night between 8th and 30th August, you can forget about getting a boil-wash, because it will have been transformed into a theatre for the European premiere performance of **Laundry at 4am** by **Oubykh Theatre**. A fiver a ticket, and the place to go obviously, if you're seeking the answer to that eternal burning question, *can your left sock be a person too?*

But is it *Ert*? Rock, roll, n' art lovers should flock to the Edinburgh **Printmakers Gallery, Union Street**, where world-renowned pop artist **Peter Blake** is exhibiting two recently completed (the ink is still wet!) and previously unseen prints of **The Beatles**. The prints form an exhibition entitled *Love Me Do*, and were created using Andy Warhol's 1980s diamond dust technique. Take the bifocals along though, because one portrait is a white-on-white piece. Mighty! It runs From 24th July to 31st August, alongside an exhibition of pop artists *Diamond Dust Volume One*, which also features a **Peter Blake** print of **Elvis Presley**.

Finally, Estelle Murgatroyd and I would like to extend our warmest congratulations to **Robert Wicksted** and **Alex Valentine**, who recently had a blessing conducted by a Church of Scotland minister in one of **Broughton Street's** finest drinking establishments, and Estelle's home-from-home, the **Phoenix Bar**. Cheers!

Persephone Belle

Be a *Spurtle* Supporter

For £1 per month (£11 for a year) you get the paper delivered to your home, along with one or two other bits of information - and know you're doing your bit to keep **Spurtle** independent and stirring!

If you're interested, drop your contribution in at Broughton Books, Broughton Place (any cheques should be made out to 'John Dickie'.)



Be Seated

traditional and contemporary upholstery
restoration
manufacture
fabrics
leatherwork
french polish
cane and rush

10a Broughton Street Lane
tel: 0131 478 7178

e: enquiries@beseated.org.uk
w: www.beseated.org.uk

Be Seated celebrates 10 years in business - 10% off fabric with this ad until end of 2004

Malcolm Chisholm MSP Edinburgh North and Leith



Constituency Office:
86-88 Brunswick Street, EH7 5HU
Tel: 0131-558 8358
Fax: 0131-557 6781
Saturday surgeries:
9am Leith Library
10.30am Royston/Wardieburn
Community Centre
12pm Stockbridge Library

THINKING OF LETTING YOUR PROPERTY?

We always require properties to meet constant demand
Broughton Property Management
61 Broughton Street
Tel 0131 478 7222
Email: broughton_prop@ednet.co.uk



New Town Broughton and Pilrig Community Council

Vacancies for Community Councillors

The Community Council represents the views of local residents to Edinburgh City Council.

We are looking for three people to fill vacancies on the Community Council. If you think you might be interested please phone the Secretary for a chat, or come along to our next meeting on Monday 9th August at 7.30pm in the Mosque, Armandale St.
Secretary: Annette O'Carroll 556 7586
E-mail: aocl@onetel.com
Please head e-mails 'Community Council'.

R.C.S.

**Specialist Commercial &
Domestic Cleaning**
No time for housework?
Floor buffing and polishing
Tel 0131 476 0201
Mobile 07747 121494

Mark Lazarowicz MP for Edinburgh North and Leith



Constituency Office:
86-88 Brunswick St, Edinburgh
EH7 5HU Tel: 0131 557 0577
Fax: 0131 557 5759
mark@marklazarowicz.org.uk
www.marklazarowicz.org.uk
Friday advice sessions:
4.00pm Stockbridge Library
5.30pm Constituency office

Many thanks to Gordon Dow of SimpleITV Training, 3 John's Place, Leith for allowing us to use his IT facilities. 0131 553 8888

Editorial, production and distribution: Alan McIntosh, Anne Aarsten, David Watt, Eileen and John Dickie, Fiona Watt, Gavin MacGregor, Ken McKay, Meg Neal, Norma McKendrick and Tim Puntis.

Published 11 months/year (not Jan). Printed on recycled paper by Clydeside Press Ltd, 37 High Street, G1 1LX