

Tram No.226

Irene Love of Bellevue Road is one of a small group of enthusiasts working on the restoration of Edinburgh tram No.226.

"This tram started life as a cable tram, before being converted to electric in 1923. It then lay in a field for many years, in the Borders, used as a holiday home. It now requires a lot of cash and dedicated work to restore it. It is hoped that one day it will run again, and members of the Edinburgh public can travel on that wonderful mode of transport."

The Group is holding a fundraising car boot sale on Saturday 20th June, Drummond Community High playground from 9am to 12 noon.

WOODCRAFT SUPPLIES

Picture Framing • Keys Cut

New shoe repair service

Timber Boards Cut to Size

Monday-Saturday

9.30am-6pm (Closed Wed. pm)

109 Broughton Street

556 9672

NEXUS CAFE BAR

60 Broughton Street

478 7069

Open 11-11pm

New Menu

Live Music Wednesday 9.00pm

Quiz Night Tuesday 9.30pm

INDEPENDENCE JOINERY

Windows, doors, floors, attic conversions, kitchens, wardrobes, and all aspects of joinery work.

For a friendly, efficient and reliable service call your local joiner on -

556 8821 or

07050 169 789 (mobile)

**ESTIMATES FREE -
VERY COMPETITIVE
RATES**

BROUGHTON **SPURTLE** aims to:

- provide a contact point for local people who want to get together and change things
- help local action groups publicise their work
- make connections between "the news" and people's own lives in Broughton
- and generally stir things up a bit!

We'll support people looking for a fair deal, but not protect privilege. We're not connected with any political group or party. And we don't get a grant from anyone.

BROUGHTON BOOKS in Broughton Place are our "postbox". You can put a letter addressed to us through their letter box at any time.

PHONE - 556 7928 or 01350 728 720
BROUGHTON SPURTLE is now on the World Wide Web on <http://www.tpuntis.demon.co.uk>

BROUGHTON SPURTLE is printed on recycled paper.

71% in the North!
94% in the Republic!
YES!

SPURTLE team for this issue:

John Dickie, Gill Flack,
Janice Johnson, Armin Davies
Tim Puntis & Richard Love
Don't be shy!

We welcome new contributors. You can either write up a local story yourself, or give us the information and we'll do it.

Phone 01350 728 720, or drop a note in at Broughton Books.

Han Pict

Come and see our unique range of Chinese furniture and many other things now available han pict from all over the world.

At 5 Barony Street. 478 7006

Contacts

Updated 18 April 1998

Bellevue and Claremont Residents Association
Alan McIntosh 556 4848

Broughton Place Residents Association
Judith Hallam 556 4595

Gayfield Association
William McNair 556 4493

McDonald Area Amenity Society
Bob Stewart 557 1267

New Town Broughton and Pilrig Community Council
Allan Wilson 554 9144

Broughton History Society
Gavin MacGregor 556 7727

Drummond Community High Head Teacher

Frank McGrail 556 2651
Surgery on Weds. 6-7pm
without appt. 7-8pm by appt. only.

Councillor Margaret McGregor

Broughton Ward
529 3283 (her office at City Chambers). Surgery at Drummond Community High School on Wednesdays, 6-7pm.

Councillor David Guest

New Town 558 8823 or 529 4268. Surgery at 67 Nothumberland Street on Mondays 6pm to 6.45pm. (The boundary with Broughton Ward runs down the middle of Broughton Street!)

Councillor Douglas Kerr
Calton Ward 529 4983 (if you live in Gayfield) Surgery at Calton Centre, Montgomery St, on Saturdays, 10-11am.

Malcolm Chisholm MP
555 3636 Surgery on Saturdays, 9.30 to 10.30am, at Leith Community Centre (and 11.30 to 12.30 at Wardie Community Centre).

Phone Spurtle
01350 728 720
or 556 7928

BROUGHTON Spurtle

No 49

June 1998

Fit and proper?

Residents must write four letters now to save their community.

This is the stark message of Bellevue and Claremont Residents Association, which has launched a letter-writing campaign to prevent a possible 'sauna/massage parlour' opening on East Claremont Street.

The move follows weeks of speculation about the future of Claremont Health Club, which closed earlier this year for a reported £90,000 refurbishment programme. Rumours, anonymous tip-offs, and a public relations silence from the Club have fuelled local fears. As has the news that the landlord Charles McKinlay is joint-owner of Lothian Road's Penthouse Sauna.

On 13th May nearly 70 people attended a public meeting to discuss the problem. Council officials clarified the law and gave advice, Councillor McGregor offered her support.

Representatives from the Health Club did not respond to a written invitation to state their case: **Spurtle** understands that two were actually at the meeting but turned down a chance to speak.

Since the meeting the Residents Association has sent out a call for action:

"Dear Neighbour
The Licensing Board will meet on 29th June to decide whether to grant retrospective permission for recent alterations at the Health Club. This will be our first opportunity to express local outrage at the possible opening of a 'sex for sale' sauna on East Claremont Street. We need to show the powers-that-be how many people are worried, and what they are worried about. Then, the Board may act to help us."

(We continue the story on page 2.)



St. James' Episcopal School in Broughton Street, sometime in the 1930s - where the Stafford Centre is today. (Photo courtesy of Olive Torrance)

**Broughton Spurtle is
free
and completely
independent**

BRIEFLY

• Broughton History Society's AGM is on Monday 8th June, Drummond Community High School at 7pm (please note the earlier starting time). After reports and elections the guest speaker will conduct an "armchair stroll" down the Royal Mile.

• The bus stop in Rodney Street is now complete with seat again, thanks to one very determined local resident who enlisted Residents Association and Community Council in his campaign to have it restored.

• Bellevue House Nursery, in Bellevue Crescent, is one of five Edinburgh nurseries to recently win high praise from HM Inspectors of Schools. It was singled out for its good team work and the relationship between the 31 children and their teachers.

• Work continues - slowly, but not steadily! - at the Bellevue Place/main road junction, to make it simpler and safer by reducing it to two flows of traffic. Nearby residents were horrified by the prospect of a large expanse of unrelieved paving stones that would be created by the widening of the pavement at their corner of the street. They made their feelings known forcefully to the City Council: and now a raised bed of plants has been added to the design.

• Last month we noted plans for a June party in Hopetoun Crescent Gardens. This has now been postponed until August, to avoid clashing with spraying and planting. Exact date to be announced later.

• There's a petition on the checkout desk at McDonald Road Public Library, calling for restoration of the former opening hours. Sign it!

Sauna scare

(Continued from page 1.)

The Residents Association suggests 4 letters objecting to the possible opening of a 'sex for sale' sauna in East Claremont Street, addressed to:

- 1 Clerk of the Licensing Board (personal attention of Robert Miller), City Chambers, EH1 1YJ.
- 2 Councillor Margaret McGregor, City Chambers, High Street, EH1 1YJ.
- 3 Malcolm Chisholm MP, 274 Leith Walk, EH6 5EL.
- 4 Lothian and Borders Licensing Division, Police Headquarters, Fettes Avenue, EH4 1RB.

"These must arrive by 19th June for maximum effect".

Bellevue and Claremont Residents Association says reasons against a sauna opening in East Claremont Street include: fears for public safety (particularly among women at night and children during the day); noise and disruption from passing traffic; a general "sleazing down" of the neighbourhood, with potentially disastrous effects on local businesses and property values. And they claim that 'sex for sale' establishments already exist nearby in West Annandale Street, London Street and Hart Street - yet another might turn the area into "an unofficial red-light zone".

A spokesperson for the Association told **Spurtle**: "Intense behind-the-scenes activity has shown that the authorities are ready and able to deal with this kind of problem. But any action by them requires public concern to be shown. Locals must commit themselves in writing."

Spurtle wonders if existing saunas nearby have really caused much of a problem? And is sex in saunas not better than prostitutes on the streets - for both the workers involved, and the local community? But on the other hand, how badly will the sauna workers be exploited? And maybe it's easier to adopt an "enlightened" position when it's not happening in your own street?

Hopetoun Action Plan

Last month **Spurtle** brought you a special insert about the Hopetoun Village project, in co-operation with the Community Council. Since then we've been to see the draft Hopetoun Action Plan at McDonald Road Library.

The plan explains the City Council's commitment to "the belief that the Urban Village concept of integrated neighbourhoods is an appropriate method of seeking sustainability and of improving quality of life in local communities." 15 site plans follow - here's the one for Haddington Place as an example. "It should be noted that the plans which have been prepared are indicative only - a guide to securing high quality development of these sites rather than strict rules which must be rigidly adhered to."

12. Haddington Place

Preferred Uses The site lies within a housing and compatible uses policy area as defined in the adopted Central Edinburgh Local Plan, which identifies Haddington Place as part of the Leith Walk district shopping centre. The Local Plan identifies housing above ground floor shops on the Haddington Place frontage as the preferred use for this site. This site could be appropriate for a City Car Club.

Site Area 0.214ha (2141m²)

Current Ownership Multiple private ownership.

Site Description The site has street frontages to Annandale Street Lane and Haddington Place and lies within the New Town Conservation Area. 34b Haddington Place comprises a two storey stone building 35-40 Haddington Place comprises a petrol filling station, garage/workshop and offices.

Access and Parking Vehicular access should be taken from Annandale Street Lane to the satisfaction of the Council. Car parking should be provided in accordance with the Council's approved parking standards.

Planning History 34b Haddington Place, conditional planning permission and conservation area consent were granted on appeal 18.6.91 for the demolition of the existing building and the erection of a four storey office building.

Development Principles A continuous frontage to Haddington Place is an essential requirement of any new development, see indicative plan below. All new buildings should reflect the existing building line, height, scale and massing of the buildings at 10-32 Haddington Place. The sensitive handling of the relationship to the adjoining library, at 41 Haddington Place, is of particular importance to the success of any redevelopment. The incorporation of mews style development, bounding Annandale Street Lane, will be encouraged. The construction of an appropriate traditional urban grain, through the separation of buildings bounding Haddington Place and Annandale Street Lane, preferably with gardens, would be a significant conservation gain. The use of high quality natural materials such as stone, slate and timber will be supported.

The wee cottage (34b) sandwiched between Haddington Place and the Esso Garage could actually be lost - it is not listed, although it dates back to the 18th century and was associated with the original Botanics site. Our reporter queried this with

And after conversation arising from last month's insert, **Spurtle** realises we should clarify something. A site plan doesn't necessarily mean the site in question is coming up for redevelopment in the immediate future. For example, on the Annandale Street Bus Station the Action Plan says "the retention of existing use is strongly supported. The site is well located for the current operational needs of LRT and represents the major employment centre within the area." But if the bus station were to move, the Plan suggests "innovative re-use of this listed building, possibly for cultural and associated uses, in order to achieve a focus for civic and community interest in the area."

The City Council intends a full-scale review at 2-yearly intervals, "following which the Action Plan should be rolled forward and updated, if necessary."

Bruce Nicholson at City Development and he confirmed that it could be demolished if a new development was in the offing (see 'Planning History' in the site plan above). Surely this needs to be noted, and the building listed?

Annandale employment opportunity

Locals and passers by will have noticed that the former Standard Life canteen in Annandale Street has been stripped down to its bare bones. It's being refurbished as a call centre. New employment opportunities should be welcome in the area; but let's hope this is going to be amongst the more progressive call centres. At their worst, they can mean "repetitious work in a goal-obsessed work environment where health and safety

could be at risk", according to a recent report. A professor at the London School of Economics "warns of parallels between 19th-century factories and their 20th-century telephone-based equivalent, where workers toil under the beady eye of an omnipresent central computer system that can not only pick up or dial calls for them, but tells them what to say and monitors their performance." (Independent on Sunday, 17/5/98)

What a life!

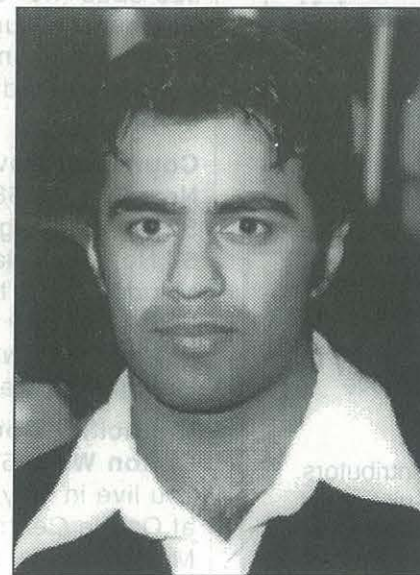
Drystane-dyker, interpreter, measuring scales, production technician, pawnbroker, composer, actor ... here's the seventh in our series on Broughton folk with interesting jobs or other activities.

Asif Mohammed, who owns the Eastern Union shop in Broughton Street, became British Tae Kwon Do champion in 1995 and bronze medallist at the WTF World Championships last year, both in the featherweight division.

He took up the sport, which involves 90% kicking and 10% punching to the head and body, nine years ago. He trained under an instructor till he reached red belt standard but has since been self-taught. He is four years away from the coveted master's degree. He used to train five hours a day, five days a week - and every day before the world event. He uses a combination of uphill runs, swimming, cycling, dancing and circus exercises, as well as TKD training in the gym to give the

special combination of speed and fitness that has got him to the top. He invents his own moves and training techniques, which give him the edge in speed of reaction.

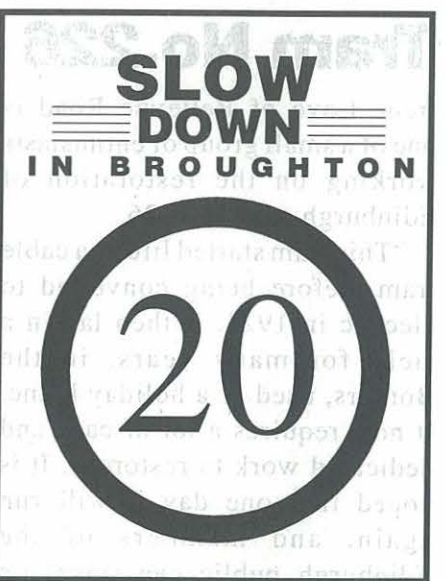
He believes he was unfairly denied a shot at the gold medal last year, so he's eager for another chance to win



the world championship. However, love comes before medals this year: the event coincides with his wedding day, 21st June!

In two years he intends to run his own club, mainly for potential champions like himself, where kids showing dedication can attain free membership and the fruits of his hard-learned secrets of success.

Although you can learn TKD for self defence or to keep fit, as a sport it has taken Asif to Pakistan, Canada and the US, but not yet to its spiritual home, Korea, which still produces the best fighters - except for Asif, of course.



A local resident contacted the City Council about getting a 20mph limit imposed in East London Street. He also contacted **Spurtle**. Between us, I we hope we've clarified the possibilities.

As the law stands at the moment, "mandatory" 20mph zones, legally enforceable, are only possible where physical traffic calming measures are already in place. Elsewhere, local authorities can put up 20mph signs, but they are purely "advisory" - that's what our own City Council has done in Princes Street.

Like other local councils throughout Scotland, Edinburgh's is now experimenting with 20mph zones in three trial residential areas. These are all areas without traffic calming measures, and are therefore only advisory. A final evaluation of those trial schemes should be completed towards the end of next year, and used as the basis for further action by local councils.

Meanwhile, there's a good chance that the Government will propose a change in the law, to make mandatory 20mph zones possible even where traffic calming measures don't exist.

So if your street already has calming measures, you can press the City Council for mandatory 20mph signs now. If it hasn't, this is still the time to start making your case for a 20mph zone - to get in the queue for either mandatory or advisory signs!